

A Tiny Babe Shows Us the Way

Vocal Solo

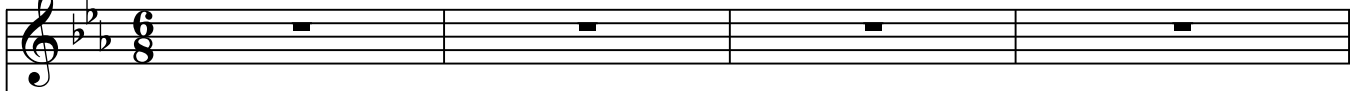
Lyrics by: Ilene Barton

Music by: Michael Smurthwaite

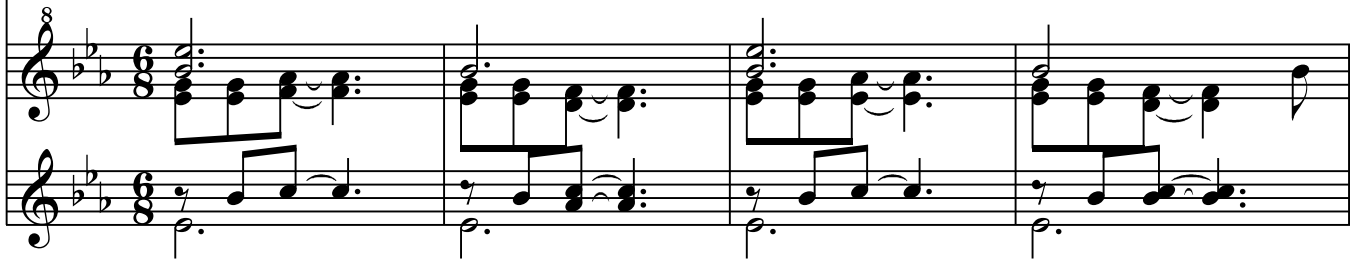
Softly, like a music box ♩ = 80

Arranged by: Greg Hansen and Michael Smurthwaite

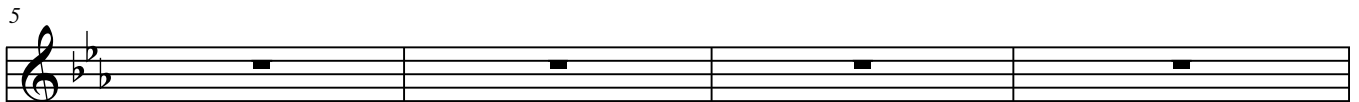
Voice



Clavichord



5

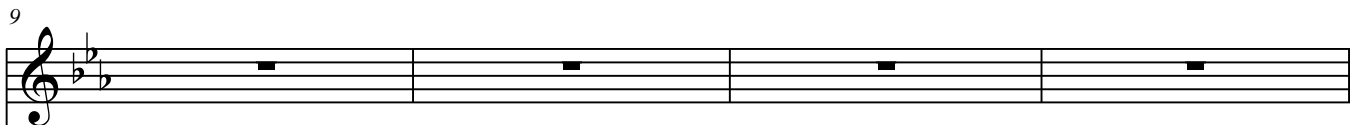


Clvd.

mf



9

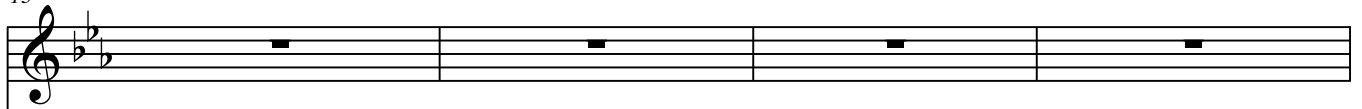


Clvd.



A Tiny Babe Shows Us the Way

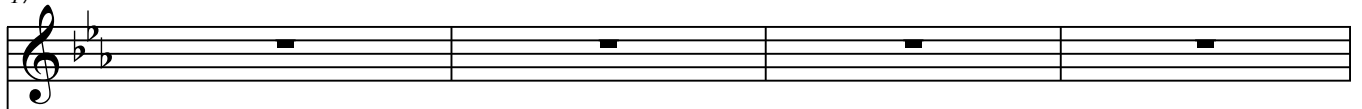
2
13



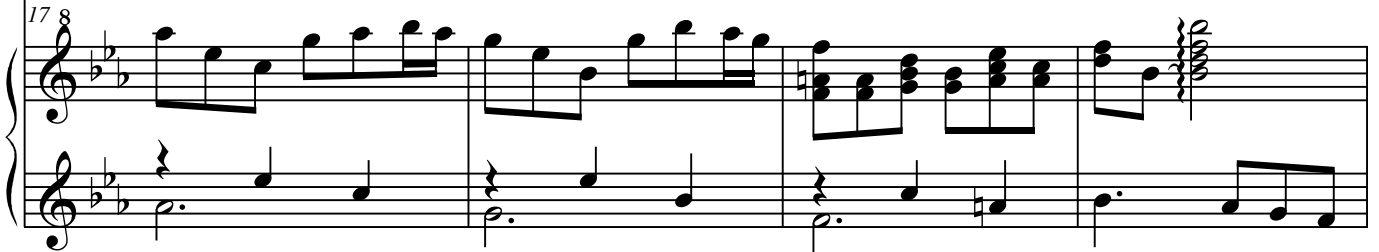
Clvd.



17



Clvd.



21



Clvd.



25



Clvd.



A Tiny Babe Shows Us the Way

29

Come fol - low me He will grow up to say

Clvd.

33

Light - en your bur - den, I am the Way!

Clvd.

37

We sing Ho - san - nas and we praise His name,

Clvd.

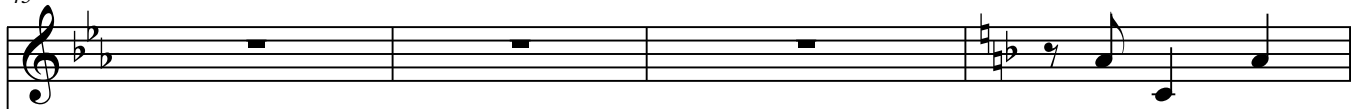
41

and give our all to be with Him a - gain!

Clvd.

A Tiny Babe Shows Us the Way

4
45

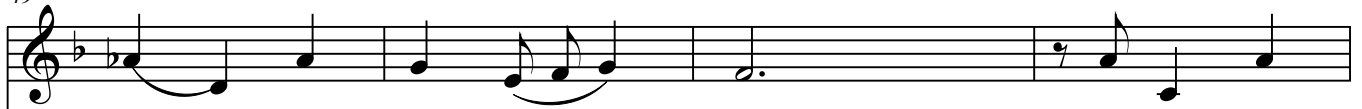


2.Be-cause He

Clvd.

Piano accompaniment for measures 45-48. The right hand plays chords and moving lines, while the left hand provides a steady bass line. A dynamic marking of *mp* is present in measure 48.

49



loves us, that Ti - ny Babe; Be-cause He

Clvd.

Piano accompaniment for measures 49-52. The right hand plays a rhythmic pattern of eighth notes, while the left hand plays a bass line of quarter notes.

53



shows us this is the way; Come fol - low

Clvd.

Piano accompaniment for measures 53-56. The right hand plays a rhythmic pattern of eighth notes, while the left hand plays a bass line of quarter notes.

57



me He will grow up to say Light - en your

Clvd.

Piano accompaniment for measures 57-60. The right hand plays a rhythmic pattern of eighth notes, while the left hand plays a bass line of quarter notes.

61

bur - den, I am the Way! We sing Ho-

Clvd.

65

san - nas and we praise His name, and give our

Clvd.

69 *ten.*

all to be with Him a

Clvd.

73

Clvd.